

Wirework Y-necklace

Form flowers
from wire, then
add a crystal-
accented clasp

designed by **Tammy Powley**

A lampworked strawberry
bead sparkles as the focal
point of a Y-necklace.

When I got my hands on a strawberry lampworked bead by glass artist D.D. Hess, I wanted to show it off by using it as the center of a Y-necklace. Since berries remind me of spring, I included wire flower components as well.

step by step

Wire flowers

[1] Cut a 2-in. (5cm) piece of 20-gauge wire. Using roundnose pliers, make a loop on one end, wrapping the wire about ½ in. (1.3cm) from the pliers' tip.

Position the pliers next to the first loop, and make a second loop (**photo a**). Make two more loops, each next to the previous loop, and trim any excess wire (**photo b**). Repeat to make a total of five flower components.

[2] Set one flower component aside. Flatten the remaining flower components by placing each on a hard surface and firmly tapping it with a rawhide mallet a few times.

Components

[1] Cut chain to the following lengths: eight 1-in. (2.5cm) pieces and one ¾-in. (1cm) piece (**photo c**).

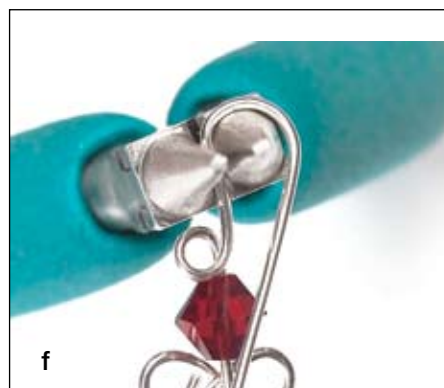
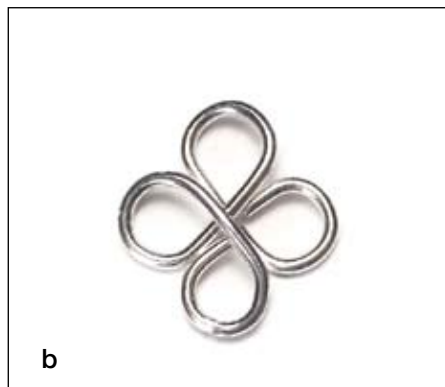
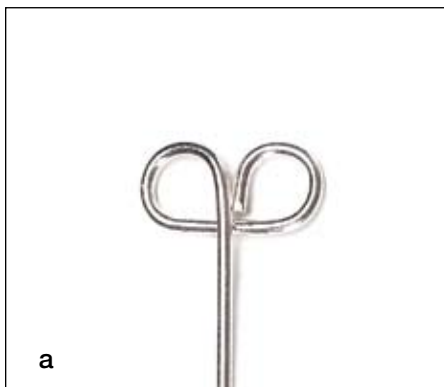
[2] Cut a 1-in. (2.5cm) piece of wire. On one end, make the first half of a wrapped loop (Basics). String a bicone crystal and make the first

half of a wrapped loop on the other end. Repeat to make a total of 11 bicone units, using bicones in two colors.

[3] On a head pin, string a bicone, a focal bead, and a bicone. Make the first half of a wrapped loop.

Assembly

[1] Attach the focal-bead unit to one end of the ¾-in. (1cm) chain. Complete the wraps. Slide the other end of the chain onto a flower component. Use nylon-jaw pliers to close the component.



MATERIALS

necklace 16 in. (41cm)

- Lampworked focal bead
- 15 6–8mm Swarovski crystals, in each of 2 colors
- 2½ ft. (76cm) 20-gauge sterling silver wire, half-hard

- 9 in. (23cm) sterling silver bar-and-circle chain (CGM, cgmfindings.com)
- 2-in. (5cm) head pin
- nylon-jaw pliers
- rawhide hammer
- roundnose pliers
- wire cutters

[2] Attach one loop of a bicone unit to the flower component on the petal opposite the chain. Attach the other loop to a second flower component. Complete the wraps.

[3] On each petal adjacent to where you just attached the bicone unit, attach one loop of another bicone unit.

[4] On each side, attach a 1-in. (2.5cm) chain, a bicone unit, a 1-in. (2.5cm) chain, a bicone unit, a flower component, a bicone unit, a 1-in. (2.5cm) chain, a bicone unit,

and a 1-in. (2.5cm) chain. Complete the wraps.

Clasp

[1] Using a 2-in. (5cm) piece of 20-gauge wire, make the first three loops of a flower component; do not trim the tail. String a bicone on the tail (**photo d**).

[2] Using roundnose pliers, grasp the wire tail above the bicone and make a loop (**photo e**).

[3] Grasp the tail above the loop, and bend the wire over the widest part of the pliers' jaw (**photo f**).

[4] Trim the wire about 1 in. (2.5cm) from the bend. Use your pliers to curl the end of the hook (**photo g**).

[5] Slide the hook component on one end of the necklace. Use nylon-jaw pliers to gently close the flower's three loops. Slide the remaining flower component on the other end of the necklace, and close the loops. ●

You may contact Tammy Powley via her Web site, tammypowley.com.

Create beautiful jewelry with *Bead&Button* magazine

With every issue of *Bead&Button* magazine you'll get 28+ projects, complete with step-by-step instructions, detailed photographs, and illustrations. Let *Bead&Button* bring endless imagination and possibilities to your jewelry making!

**Subscribe
TODAY!**



Order online at

www.beadandbutton.com/promo

Enter code I4D2 or call 800-533-6644

Monday-Friday, 8:30 am - 5:00 pm Central Time. Outside the U.S. and Canada, call 262-796-8776.